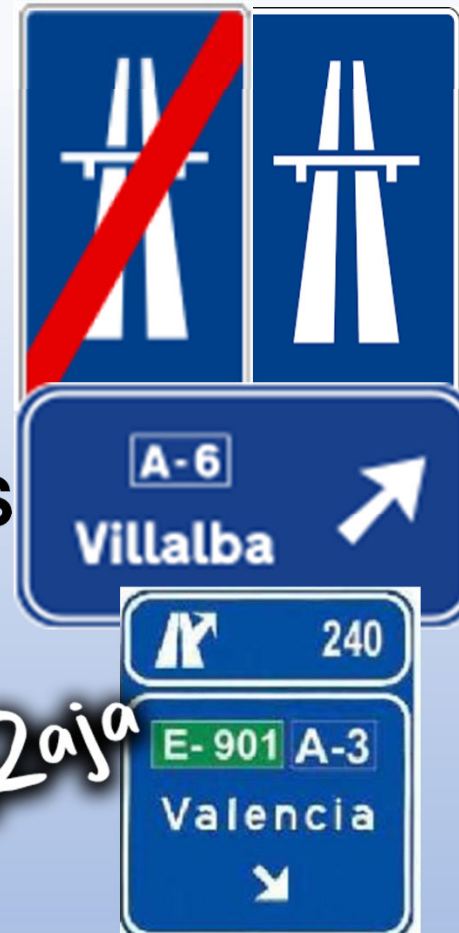


## Autopistas = Motorways

(Toll roads, controlled-access)

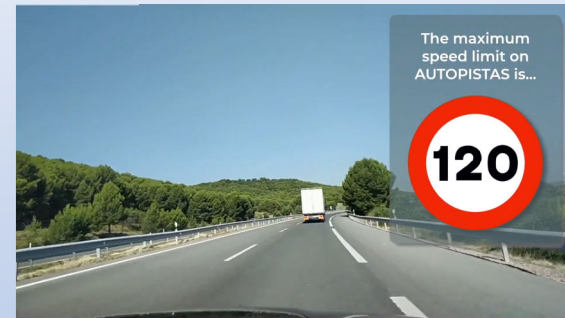
- ✓ Toll roads, Controlled-access
- ✓ Higher-standard, Toll Cabins
- ✓ Central Reservation, Metal / Concrete
- ✓ No Intersections, Direct access
- ✓ Service Station at 40 km or more, Blue **SIGNS**
- ✓ No Pedestrians/ Animals
- ✓ Speed Limits = 120 – Minimum = 60
- ✓ Cannot Exceed – Even for Overtaking
- ✓ Speed when through Town = 80 km/h



Shahid Raja

## Motorway Rules - 1

- ✓ **Abnormally Slow Speed?** Less than 60/km
- ✓ **Malfunction?** Drive on Lane / Shoulder  
Leave at next Exit
- ✓ **Breakdown?** Stop on Shoulder  
Hazard Triangles V-16, Reflective Vest



## Motorway Rules - 2

- ✗ **Driving on Diagonally Stripped Area**
- ✗ **Driving/ Stopping / Parking on Traffic Island**
- ✓ **Stop in This Central Reservation when **NO Alternative****
  
- ✗ **Not Allowed to Reverse**  
Hazard Triangles V-16, Reflective Vest
  
- ✓ **Drive in the Right Lane**
- ✓ **Left Lanes are for Overtaking  
Or in case of Obstacle**



## Motorway Rules - 3

- ✗ **No U-Turn at Spaces**
- ✓ **U-Turns / Change of Direction at Designated Places – Different Level**
  
- ✗ **Exit Approach Panel**  
Hazard Triangles V-16, Reflective Vest
  
- ✗ **Hichhikers**
- ✓ **Left Lanes are for Overtaking Or in case of Obstacle**



Shahid Raja

## Motorway Rules - 4

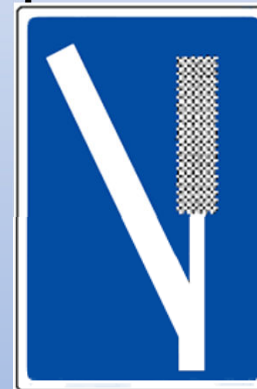
### Stopping/ Parking on Motorways

- ✓ Only at designated areas, Rest Areas



### ✗ Emergency Stopping

Shoulder / Hard Shoulder / Escape Zones



Shahid Raja

## Motorway Rules - 5

### **Heavy Rain, Snow, ICE, Thick Fog**

- ✓ Slower than minimum Speed is allowed
- ✓ in Traffic Jams - Allowed  
at Designated Places – Different Level
- ✗ Faster in Right Lane in traffic Jams  
Not considered OVERTAKING
- ✗ Hichhikers
- ✓ Left Lanes are for Overtaking  
Or in case of Obstacle



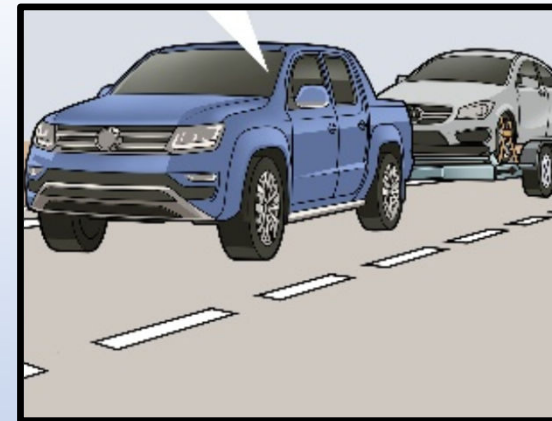
## Motorway Rules - 6

✗ Towing a car with another Passenger car - **NO**

✓ **Motorways are Safer than Conv. Roads**  
Separation, Limited Access, Better Design

✓ **Distractions – Monotonous Straight Roads**

✓ **More Accidents Possible**



Shahid Raja

## Motorway Slip Lane Rules - 7

### Acceleration Lane

- ✗ Right of way in Slip Lane - NO
- ✓ Yield other Vehicles – YES
- ✓ Travel on Adequate Speed,  
Appropriate to Lane Entering



## Deceleration Lane

### Deceleration Lane

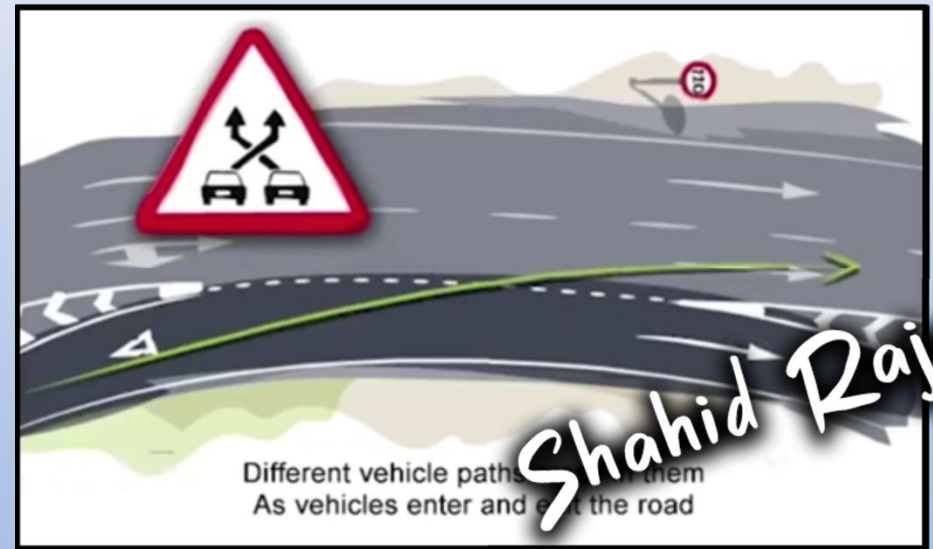
- ✓ On Motorway, when leaving motorway
- ✓ Dedicate Lane for Exits
- ✓ Slow-Down Gradually, Exit Safely
- ✓ Signal Early
- ✓ As soon as possible, to adapt speed
- ✓ Slowing down after entering the lane



Shahid Raja

## Braided Track/ Trenzado

- ✓ Twisting or Weaving Lanes /  
**Braided Track/ Trenzado**
- ✓ Leaving the Motorway  
using the braided lane.



## Autopistas = Motorways (Toll Payment)

- ✓ R-418 Toll Sign
  - ✓ Dynamic or electronic Toll System
  - ✓ **Vehicle** must be equipped with Device
  - ✓ Pay the toll **automatically.**
- 
- ✓ Dynamic or electronic Toll System
  - ✓ **and CASH Payment**



Shahid Raja

A-28

# Autovias = Dual Carriage Way (Free to use)

- ✓ Quite Similar to Motorways
- ✓ FREE to use
- ✓ Central Reservation.
- ✓ May have access from Junctions / Properties
- ✓ Service Station at 40 km or more
- Blue **SIGNS**
- ✓ Speed Limit 120/ 60 (**Some parts – 80**) km/h



Carreteras Nacionales - National Roads

## Carretera Convencional - **Conventional Roads**

**N-432**

- ✓ FREE to use – Letter N, Road Number
- ✓ NO Central Reservation.
- ✓ Usually One Lane Each direction.
- ✓ 2 Lanes Going Uphill
  
- ✓ Speed Limit 90 / 45 km/h - (50 in town – Cross Town)

*Shahid Raja*

# Conventional Roads

(With Physical Separation)

- ✓ Track reserved for cars/ Automobiles/ Motos  
Motorcycle and motorhomes - MAM 3500 Kg
- ✗ No Pedestrians, Moped, Low Mobility
- ✓ School Transport + Dangerous Goods = Reduces 10 km/h
- ✓ Two/ Three Lanes – **With Separator**
- ✓ Speed Limit is 100, Busses 90
- ✓ Green Signboards, Find exiting cities



## (Vías Urbanas) - Urban Roads

- ✓ inside towns, cities, or villages
- ✓ pedestrian traffic, intersections, traffic lights
- ✓ buildings along the road
  
- ✓ Managed by local councils (ayuntamientos)
- ✓ Start of urban area (white sign with the town name)
- ✓ Cars, Motorcycles, Buses, Pedestrians

Shahid Raja

# Urban Roads



**20 km/h** on roads with a **single carriageway** and path/sidewalk.



**30 km/h** on roads with **two lanes** going in different directions.



**50 km/h** on roads with **two or more lanes** per direction.

*Shahid Raja*

## (Travesías) - Cross-Town Roads

- ✓ Connecting different Localities
- ✓ Speed Limit 50 km/h MAX.
- ✓ May be 50 se low, Sign Posted
- ✓ Pedestrian crossing/ Roundabouts, Intersections, traffic lights
- ✓ **Classification** = Inter-Urban Road



But be alert, the limit might drop sharply when approaching towns.

