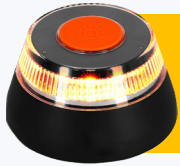




V16 - Pre-signaling Device (Amber)



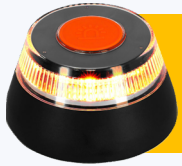


V16 - Pre-signaling Device (Amber)

- ✓ **Replaces** the classic triangles, **01/01/2026**. *Connected - Sold since 2023*
- ✓ Passenger cars, mixed vehicles and automobiles for transport of goods and buses, dangerous goods.
- ✓ Glove compartment, and charged
- ✓ Mounted **as high as possible**, Stopped Vehicle
- ✓ **Roof too high**: Magnet/ Suction cup, or anywhere visible
- ✓ **Emits 360** – At least 1 km range, **favorable Weather**.
- ✓ **International transport** - V16, Triangles also Permitted.
- ✓ Outside of Spain, Vehicles **Reg. in Spain**



Shahid Raja



V16 - Pre-signaling Device

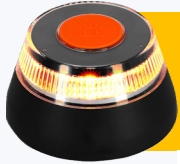
- ✓ **Immobilized** or Load has fallen
- ✓ Load Fallen: Call **112**, they will secure.
- ✓ Lithium **battery 18 months** Lifespan, 30 Min of Operation.
- ✓ Battery Expiry Date printed.
- ✓ **SIM integrated**, Waterproof and Robust

Non rechargeable
+ USB chargeable MODELS

It does not

- ✗ Dial 112, Call Insurer, tow-truck, e-Call
- ✗ **Register: Not** with DGT, May be with Manufc. for Marketing
- ✓ it's warning device **NOT** Rescue

Shahid Raja



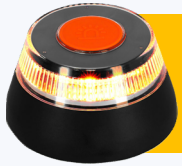
Certified Brands – DGT List

Certification date	Certificate number	Model	Brand	Applicant	Certificate
December 22, 2022	LCOE 2022110790G1	Help Flash IoT	HELP FLASH	NETUN SOLUTIONS, SL	↓
January 20, 2023	LCOE 2023010020G1	FlashLED SOS	FLASHLED	TURISPORT SL	↓
February 8, 2023	LCOE 2023010084G1	PF LED ONE V16	PF ERUM VIAL	ERUM VIAL, SL	↓
March 14, 2023	LCOE 2023010078G1	DP-EL2022-C1	SOS ROAD, NK, STRONG	Escudero Fijo Distributions, SL	↓
March 27, 2023	LCOE 2022120961G1	iWottoLight IoT	iWottoLight	WOTTOLINE, SA	↓
June 12, 2023	IDIADA PC23060613	MOD100	3e / beacon3e / CAR-LITE	EFFICIENT ELECTRICAL ENERGY, SL	↓
June 26, 2023	LCOE 2023060544G1	FASELIGHT IoT	FASELIGHT	WOTTOLINE, SA	↓
July 14, 2023	LCOE 2023070648G1	Help Flash IoT 9V	HELP FLASH	NETUN SOLUTIONS, SL	↓
July 28, 2023	LCOE 2023070693G1	HV16.1	HELLA	HELLA SA	↓
September 4, 2023	LCOE 2023080717G1	MI VP10144-A	ResQLight, Alert Wise, DriveLit,	MIROVI, SL	↓

[<](#) [1](#) [2](#) [3](#) [4](#) [5](#) ... [26](#) [>](#)
Show 10 records

<https://www.dgt.es/muevete-con-seguridad/tecnologia-e-innovacion-en-carretera/Dispositivos-de-presenalizacion-V16/DP-EL2024-C1>

Shahid Raja

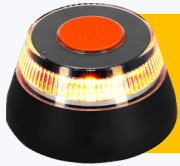


V16 - Pre-signaling Device

- ✓ **Uses Low-power**, Narrow band Non-Removable SIM card.
- ✓ **12 years** Connectivity – Included in V16 price.
- ✓ Works better in tunnels and mountains.
- ✓ **Alert others by:** Navigation, Apps (**Waze, COYOTE**), Screens, or Onboard System
- ✓ Battery Expiry Date printed.
- ✓ **SIM integrated**, Waterproof and Robust
- ✓ **First 100 seconds** = Test Mode
- ✓ Check the light and **battery Status**, then signals to **DGT 3.0**



Shahid Raja

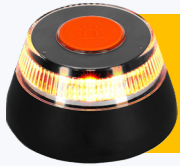


V16 – Other Cases



- ✓ **Not Mandatory** for MOTO, Highly Recommended
- ✓ **Place** on Fuel tank, Seat or Trunk, Mirror Bar
- ✓ **Several Vehicles:** can be Transferred, but Better each have one.
- ✓ **Sell Vehicle:** Responsibility on New owner, You may handover
- ✓ **Leased Vehicle:** Lessee Responsibility
- ✓ **Rented Vehicle:** Company's Responsibility





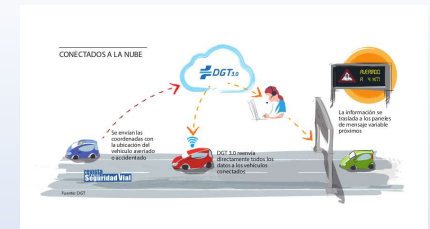
V16 – Works only when turned on

NB-IoT = **Narrowband IoT**, a mobile network

- ✗ No speed monitoring
- ✗ No Geo tracking or Police Following

- ✗ Not connected to Tax Agency
- ✗ No personal Data sending
- ✗ Not connected with License Plate

- ✗ Connection without setup or additional costs

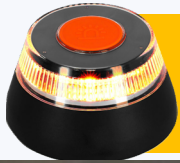


What it is used for

When you activate the V16:

1. The beacon sends:
 - 📍 GPS location
 - 🕒 Time
 - 📱 Device identifier
2. The DGT 3.0 platform uses the identifier to:
 - Know this is a **new incident**
 - Avoid duplicate alerts
 - Manage and later close the event

Shahid Raja



V16 – Works only when turned on

SOS ROAD CONNECTED

Mobile technology

- Connected to **DGT 3.0**
- GEOLOCATED**
- NB-IoT**
- ROAD SAFETY**
- BATTERIES INCLUDED: AA X3

Wind Resistance

- 360° VISION**
- LED**
- MAGNETIC NEODYMIUM**
- IP54 IMPERMEABLE WATERPROOF**
- 180 Pa**

SOS ROAD CONNECTED CAD 09/2038

CERTIFIED PRODUCT
V16
CONNECTED
LCOE 202407067761

Connected by **Orange**

DATA INCLUDED
UP TO 2038

CONNECTED TO DGT PLATFORM 3.0
Connection without activation or additional costs

Scan this QR code to check the connection with **DGT 3.0**

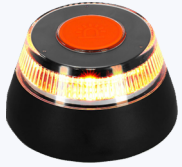
COYOTE

3 months of PREMIUM APP

Avoid Fines
100% Legal

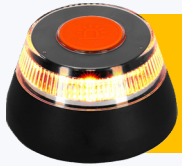
COMPLIES WITH DGT REGULATIONS
Mandatory device from 2026

Shahid Raja



EXAM Questions

Shahid Raja



V16 – Why Triangles Replaced?

- ✗ No need to Exit the Vehicle
- ✗ No Reflective Vest No Walking on Shoulder

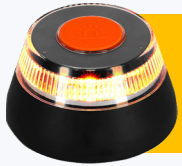
BUT If it need tyre replacement

- ✓ Use V16
- ✓ Put reflective vest on
- ✓ Carefully change the tyre

- ✓ Switch off **V16**



Shahid Raja



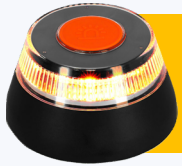
V16 – Why Connected

- ✓ **Connected** to DGT 3.0
- ✓ Built-in **Narrowband IoT**, A mobile network
- ✓ Sends Real Time signals to DGT
- ✓ Enables DGT to Alert near by Drivers
- ✓ Using Google Map, Variable Message Panels, Mobile Apps Like **Waze**, **COYOTE**, On-board Vehicle System



Shahid Raja





V16 – All legal?

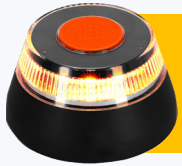
- ✓ **No**, only DGT verified
- ✓ Check DGT.es website



- ✓ <https://www.dgt.es/muevete-con-seguridad/tecnologia-e-innovacion-en-carretera/Dispositivos-de-presenalizacion-V16/DP-EL2024-C1>

- ✓ Display certification marks **approved by the DGT**

Shahid Raja

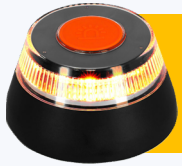


V16 – Triangles?

- ✓ **Triangles NOT Valid**
- ✓ **V16 only Legal Warning Device**
After 01 January 2026
- ✓ **Triangles allowed:** if travelling Out-Side Spain
- ✓ **Triangles ALSO allowed:** for Foreign Registered vehicles



Shahid Raja

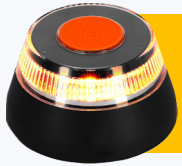


V16 – Where to keep it

- ✓ **Glove Compartments**
- ✓ **Accessible place** without Exiting the vehicle
- ✓ **Batteries** should be Charged
- ✓ it covers 18 Months Minimum
- ✓ **if not working**, means you have not correctly signaled = **€200** Fine



Shahid Raja



V16 – 18 months in the Car?

- ✓ it covers 18 Months Minimum
- ✓ **Check** if drained, Charge or Replace
- ✓ **Check** if the light turns on
- ✓ **Making sure and** Satisfaction is important



Shahid Raja



V16 – Where to Place?

- ✓ Highest Place, ROOF
- ✓ Or on the door with Magnet
- ✓ **if roof** is too high
- ✓ **May Exit carefully** and place where appropriate



Shahid Raja

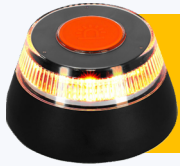


V16 – Visible?

- ✓ Emits a **high-intensity flashing** amber light
- ✓ Provides **360° visibility** in all directions
- ✓ Clearly visible **day and night**
- ✓ Effective in **rain, fog, and low-light** conditions
- ✓ Visible from long distances (**up to ~1 km**)
- ✓ Positioned at the **highest point** of the vehicle
- ✓ **Immediately alerts** approaching drivers
- ✓ Enhances **roadside safety** while the vehicle is stopped

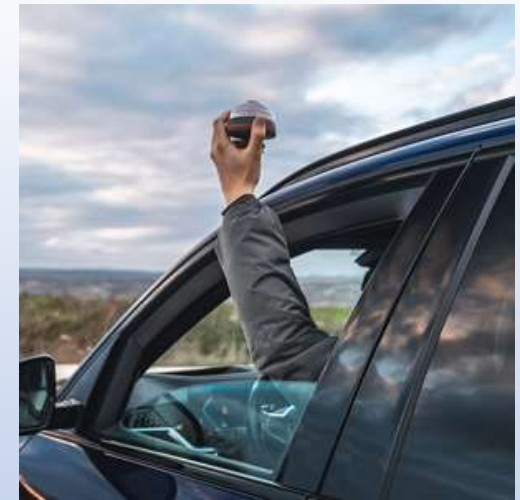


Shahid Raja



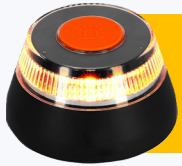
V16 – Bad Weather?

- ✓ Fog, rain, snow, curves
- ✓ Still visible because of high intensity
- ✓ Transmits location data
- ✓ DGT 3.0 traffic systems



Improves safety in low-visibility environments

Shahid Raja

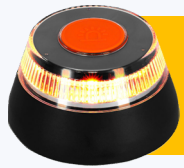


V16 – Mobile phone to connect?

- ✓ No mobile phone is required
- ✓ V16 has built-in connectivity (SIM/eSIM)
- ✓ Connects automatically to DGT 3.0
- ✓ No apps or pairing needed
- ✓ Works Mobile Signals are Low
- ✓ **Narrowband IoT**, Built-in SIM
Provides Strong - Mobile network



Shahid Raja



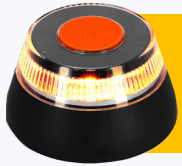
V16 – Connect To Emergency Services?

- ✓ It only sends Geo Location to DGT 3.0
- ✓ No personal Details
- ✓ No Ambulance or Any Services

- ✓ You need to call **112**
- ✓ and ask for Services



Shahid Raja

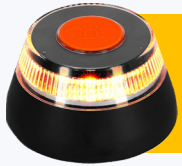


V16 – Works in Tunnels?

- ✓ **Uses NB-iot** (Narrowband Internet of Things)
mobile connectivity, designed for difficult environments
- ✓ Tunnels have **mobile coverage** and repeaters
- ✓ Location is sent to **DGT 3.0**
- ✓ **Amber light** remains visible.
- ✓ **Tunnel incidents** are treated as **high-priority safety events**



Shahid Raja

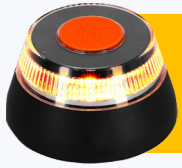


V16 – Battery?

- ✓ **18 Months** in general
- ✓ 30-60 Mins. Continuous Flashing
- ✓ To ensure visibility in emergencies



Shahid Raja



V16 – Battery?

- ✓ **18 Months** in general
- ✓ 30-60 Mins. Continuous Flashing
- ✓ To ensure visibility in emergencies



Shahid Raja



V16 – Which Vehicles?

✓ **Not Mandatory for MOTO, Highly Recommended**

Shahid
Raja



Shahid Raja