

# 1

## Passenger Seating

- ✓ Forbidden to exceed the maximum number of authorized seats.
- ✓ Each person must have their own seat and seatbelt.
- ✓ VAN - 9 Seats (Driver + 8 Passengers)
- ✓ The **driver is responsible** for making sure all passengers are seated correctly. Like Seatbelts, pets, luggage etc..



# 2

## Child Restraint Device - CRS

✓ Less than 1.35 Meter Child can not travel at front

✓ **APPROVED** Child Restraint System according to their size and Weight.

✓ **3 Exceptions** for FRONT Seat:

**1 NO** Rear Seats

**2 Already Occupied** by other Children NOT Adults

**3 Not Possible** to install CRS

✓ **Medical Condition** (Additional Authorization)



Shahid Raja

# 3

## Rear Facing Device

- ✓ If on the FRONT  
**Deactivate Air bags**
- ✓ Front facing is **not recommended**  
on the Front Seat.
- ✓ If in any case need to use
- ✓ Leave the Air Bags **Activated**  
But Pull the /seat back for  
Minimum Distance of **25-30 cm**



# 3

## Child Restraint Device - CRS

✓ **FIRST:** Select device according to Weight  
=> Next height can be considered.  
Bcoz children grow differently.

### 3 GROUPS

- ✓ **0 and 0+, Newboarn → 13 kg (Rear facing)**
- ✓ **Group 1 → 9-18 Kg (Forward facing)**
- ✓ **Group 2-3 → 15-36 Kg**



Shahid Raja

# 3

## Recommendations- CRS

- ✓ 135 – 150 Still recommended at the back
- ✓ **But can** use front seat and seatbelt
- ✗ **BUT Over 135 and 8 Years** old Child  
Must Sit in the back.

Until 12 Years (**Exceptional Growth cases**)

Shahid Raja



# 3

## TAXI - CRS

✓ Urban Roads – Must use CRS  
If not available, Allowed to use **REAR Seat**  
if child can use Seatbelt (4-5 Years)

✓ Interurban – Must Use CRS –  
**Passenger Responsibility**

✓ or Passenger gets fine **200**



Shahid Raja

# 4

## ISOFIX – Rear Center Seat

- ✓ International Standards Organization Fix
- ✓ Passive safety system
- ✓ Improves the safety.
- ✓ Securely attach child safety seats to the car without using the car's seat belts
- ✓ Anchors built into the car seat and the child seat.
- ✓ Making it safer and more stable.



Shahid Raja

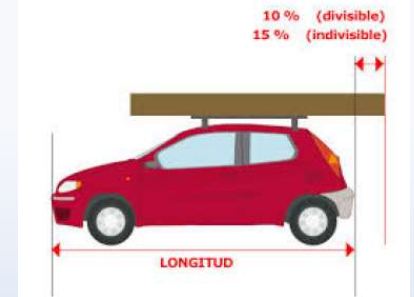
# 5

## Passenger Car Load

Load cannot extend out of the vehicle  
**BUT there are exceptions:**

### Passenger Car:

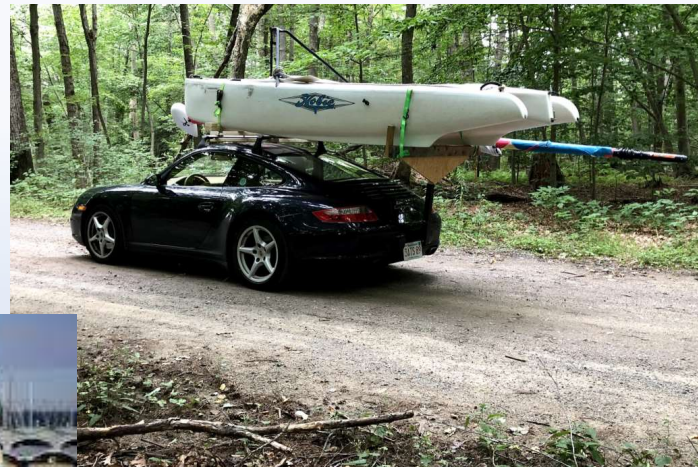
- ✓ Extended on at the Back only
- ✓ **Divisible** 10% of Vehicle length
- ✓ **Indivisible** 15% of the Vehicle length
- ✓ Mark with Red and White Panel (V-20)  
+ Red light at night or Low Visibility



**V-20 Signal**

# 5

# Passenger Car Load



Shahid Raja

5

**NOT Allowed**



*Shahid Raja*

# 6

## Adapted Mixed vehicles vehículo mixto adaptable

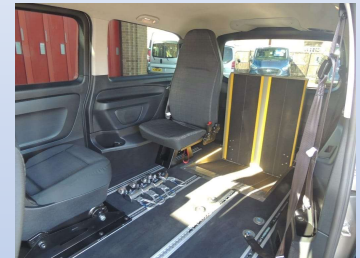


- ✓ Seats added, Removed, Folded.
- ✓ In Adapted Mixed vehicles ✓ Only Passenger (VAN/ truck less 3500 Category)



- ✓ B License if up to 3500
- ✓ Both Simultaneously
- ✓ 9 occupants including the driver

Truck Less than 3500	
Up to 2 years	Exempt
From 2 to 6 years	Every 2 years
From 6 to 10 years	Every year
More than 10 years	Every 6 months

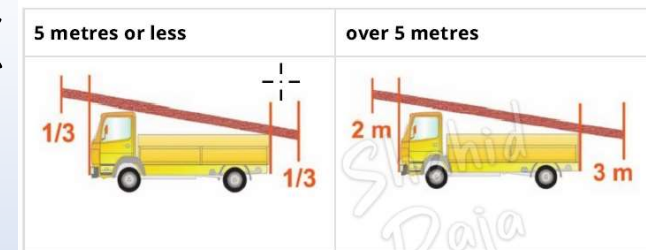


Shahid Raja

# 7

## Transport Goods Vehicles

- ✓ 5 Meters or Less
- ✓ 1/3 of Vehicle Length, FRONT + BACK
- ✓ Over 5 Meters
- ✓ 2 Meter FRONT
- ✓ 3 Meter BACK
- ✓ Extend 0.4 Meters Each Side BUT  
Total Width Not Exceeding 2.55 M

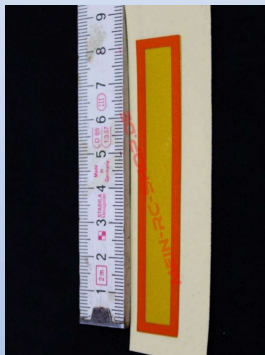
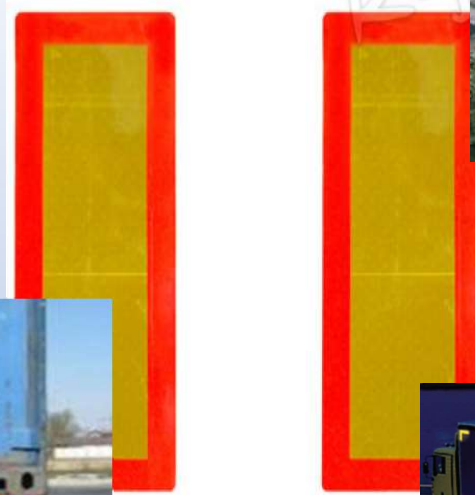


Shahid Raja

# 8

## Maximum Height and Length

- ✓ **Height – General Rule 4 Meters**
- ✓ **Industrial – Special Authorization / Certificate**
- ✓ **Length: More than 12 Meter**  
like buses, articulated trucks, trailers
- ✓ **Mark with Panels**



Shahid Raja

- ✓ **8 Inches Min.**

# 8

## Industrial Vehicle

- ✓ Height – General Rule 4 Meters
- ✓ Industrial – Special Authorization / Certificate
- ✓ Oversized Load



Shahid Raja

# 9

## Vehicles Less than 1 Meter wide

✓ Motorcycles, Mopeds

✓ Front - NO

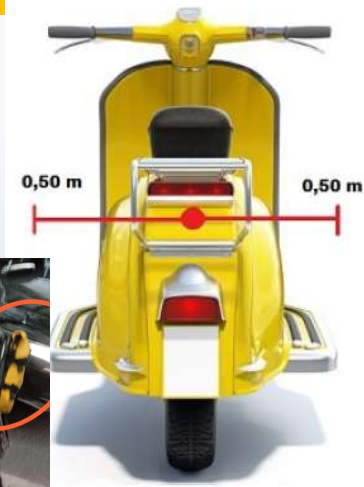
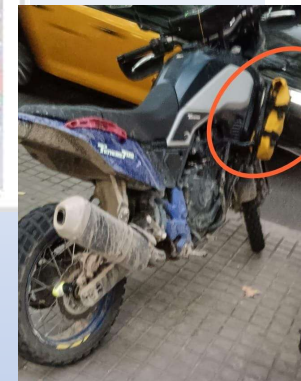
✓ 0.5 M - Sides

✓ 0.25 M - BACK

✓ Including Vehicle **Axis**

✓ **Marking:** DGT has not Set Standard, **NOT REQUIRED**

✓ Securely fastened, Buckled, No Issue of Stability or  
Visibility

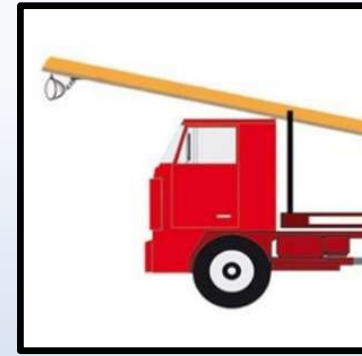


Shahid Raja

# 9

## Extend in Front

- ✗ **DAY** – Signaling not required
- ✓ **NIGHT/ Low Visibility:** (At overhanging part)



Use both a **white light** and a **white reflector**

So approaching drivers can detect the overhang early.

**Wrong** – “white light only”:

Lacks the passive reflection needed **if the lamp fails** or when seen from **angles where the light is less obvious**.

*Shahid Raja*

**Bicycle Carrier**



**Bicycle Carrier with Bicycle**



*Shahid Raja*

**If the cargo is less than the total width of the vehicle**



Vehicle width including mirrors

You must display the V-20 signal located at the end of the load and perpendicular to the axis of the vehicle

**If the cargo is wider than the total width of the vehicle**



Vehicle width including mirrors

You must display two V-20 signals located transversely at each end of the load in such a way that they form an inverted "V" shape with the reflective lines

**If the cargo occupies the total width of the vehicle**



If the licence plate or taillights are hidden by the load, a additional lighting and signalling device plus an additional licence plate outside the load would be necessary

*Shahid Raja*

NOT Allowed – A Special Authorization may be issued



If the load exceeds the maximum width of the passenger car from the rear (including mirrors), it cannot be transported

Shahid Raja

# 9

## Rules on LOAD

### Passenger Cars:

- ✓ Boot, Roof Rack, Trailer, Back Seat but Fastened Properly
- ✓ Can not Fall on the Ground
- ✓ Drag, Obscure Lights

### Trucks:

- ✓ Dusty Material
- Falling Object **MUST** be Covered

✗ NOT Allowed



# 4

## Passenger on Bicycle

- ✓ Certified **child seat** at Rear.
- ✓ **Only one** passenger Allowed
- ✓ Passenger must be a child **under 7 years**
- ✓ **Rider** Must be an **adult (18+)**
- ✓ Penalty **€100** fine for non-compliance
- ✓ **Certified Helmet**
- ✓ **Reflective Garment** on **Interurban Roads**
- ✓ Lighting is mandatory
- ✓ **Recommended** on all roads



Shahid Raja

# 4

## Passenger on Bicycle

**✗** Transporting **two children on a standard bicycle is prohibited, Because:**

- ✓ The bicycle is designed for **one occupant**
- ✓ The regulation allows **only one child** as an exception.



Carrying two children would only be possible if the bicycle is specifically designed and approved to carry more than one passenger **(for example, special cargo or multi-seat bicycles)**

*Shahid Raja*

# 4

## Passenger on Bicycle

Can an adult transport a passenger on a bicycle that, by design, cannot be occupied by more than one person?

1. No, it is prohibited.
2. Only if the rider pedals standing up and the passenger sits on the saddle.
3. Yes, a child up to seven years old in an approved additional seat.



Motorcycle have different **RULES**, It is prohibited, must be approved for 2 seats and footrests

## Trailers with bicycles – Article 12

- ✓ May **tow trailers**
  - ✓ Not Exceeding 50% of the bicycle's unladen weight
  - ✓ Only day time! (**Not Night or in Low Visibility**)
  - ✓ 10% Speed Reduced
  - ✗ **No People in the Towed TRAILER (Article 12)**
  - ✗ **Prohibited on interurban roads**  
Even if the trailer is approved
- Urban Areas**
- ✓ Municipal Ordinances apply
    - **Carry children in the trailer**



Shahid Raja

4. Las motocicletas, los vehículos de tres ruedas, los ciclomotores y los ciclos y bicicletas podrán arrastrar un remolque o semirremolque, siempre que no superen el 50 por ciento de la masa en vacío del vehículo tractor y se cumplan las siguientes condiciones:

- a) Que la circulación sea de día y en condiciones que no disminuyan la visibilidad.
- b) Que la velocidad a que se circule en estas condiciones quede reducida en un 10 por ciento respecto a las velocidades genéricas que para estos vehículos se establecen en el artículo 48.
- c) Que en ningún caso transporten personas en el vehículo remolcado.

En circulación urbana se estará a lo dispuesto por las ordenanzas correspondientes.

c) That under no circumstances may People be transported in the towed vehicle.

In **urban traffic**, what is set out in the corresponding municipal ordinances will apply.

**No enforcement in practice**

In reality, police usually only intervene if the setup is **dangerous, blocking traffic**.

Shahid Raja

# Loading/ Unloading Rules

- ✓ Loading/ Unloading process: **Off the Road**
- ✓ **You can** Stop in Loading and Unload Area
- ✗ Load on thoroughfare, Sidewalk, Footpath
  
- ✓ Avoiding unnecessary noise and inconvenience
- ✓ Load affects acceleration, braking, stability

